

# MINDENHURST

## Construction Update

December 2022



CREATED WITH CARE BY  
**SKANSKA**




### Merry Christmas

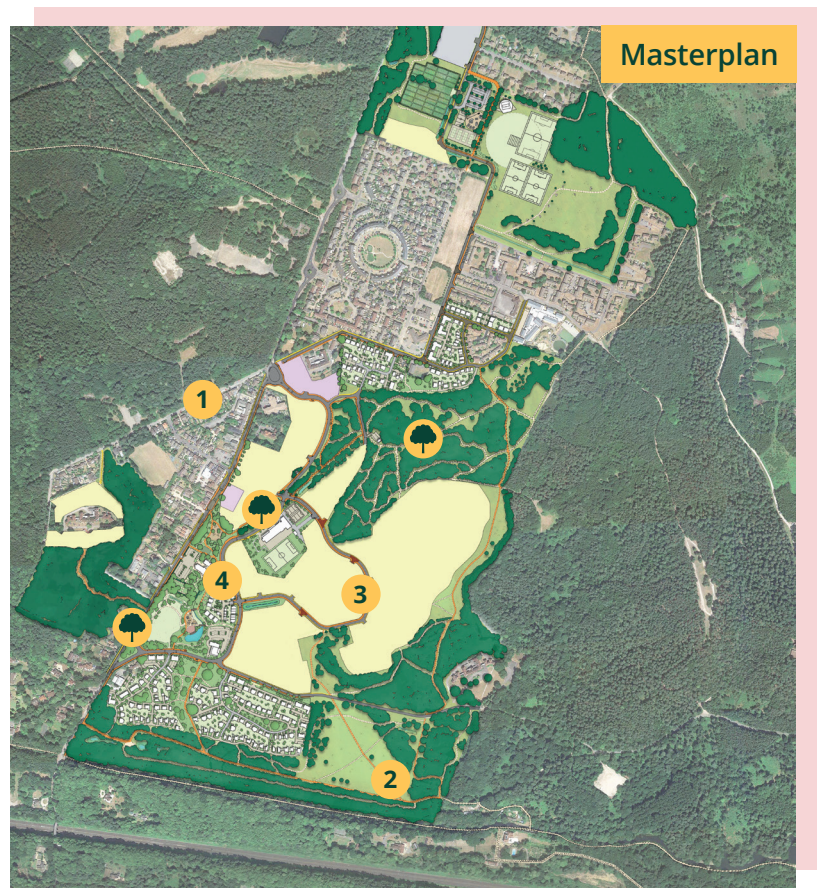


We would like to take this opportunity to send everyone in the Mindenhurst community our very best wishes for a happy festive season.

Welcome to the Christmas edition of our monthly newsletter, which we use to keep you up to date with the latest progress from Mindenhurst and a direct, on-site point of contact for any concerns or queries you may have. Find out more on our dedicated Facebook page: [facebook.com/MindenhurstDeepcut](https://facebook.com/MindenhurstDeepcut)

## Construction Update

- 1 We will refill the trench on Blackdown Road and reopen the footpath before the Christmas period.
  - 2 There will be an increase in site traffic as we continue with the demolition of the Fuel Depot in the Southern SANG. Residents who live nearby will receive further information. As always, our team will closely monitor noise levels and stay within the agreed working times.
  - 3 The team is progressing the Loop Road construction works and in coming weeks we will be starting work on the drainage system. There will be some additional traffic to deliver machinery and materials to support these works.
  - 4 Our refurbishment of St. Barbara's Church continues, the next stage of work includes repairs and external painting.
-  Our landscaping team will carry out maintenance along the Village Green, Central SANGs and Mindenhurst Road.



## What's on this festive season?

- ★ Sunday 11th December | 5pm-6pm  
**Community carol singing at The Frog**
- ★ Saturday 24th December | 5pm-6pm  
**Carols at the Crib, Mindenhurst School**
- ★ 16th December to 22nd December  
**Elf trail in the SANG**
- ★ Saturday 24th December | 11pm-midnight  
**Midnight Communion at Mindenhurst School**
- ★ Wednesday 21st December | 10am-midday  
**Community drop-in and Christmas Coffee Morning at the Project Office, Mindenhurst Road**
- ★ Sunday 25th December | 10.30am-11.30am  
**Christmas Day Celebration at Mindenhurst School**



## Supporting The Hope Hub this Christmas



We are collecting donations for The Hope Hub, which is a local charity working tirelessly to help prevent and end homelessness.

Between now and our December drop-in session on Wednesday 21st, you can donate the following items at the project office:

- ❄️ **Christmas treats** - chocolates, mince pies
- ❄️ **'Just add water' items** - pot noodles, instant porridge
- ❄️ **Meals in a tin** - spaghetti hoops, chicken casserole
- ❄️ **Toiletries** - deodorant, toothbrushes, toothpaste, bodywash



## Christmas tree recycling point

Don't forget to drop off your Christmas tree at our recycling point after Christmas.

We'll recycle and reuse them on the development, so, if you want your Christmas tree to have a lasting place at Mindenhurst then please bring it to our collection point just outside our office on Newfoundland Road. We will be collecting trees between **26th December and 8th January**.

## Sign-up to e-newsletter

In addition to this regular construction newsletter, we also distribute an e-newsletter to subscribers that provides updates on any changes to the construction programme, including unexpected road closures.

Signing up to this e-newsletter means you will receive the latest news quicker, and a digital copy of our regular construction newsletters.

Please visit our website [mindenhurst.co.uk/get-in-touch](http://mindenhurst.co.uk/get-in-touch) to subscribe today!



## Mischievous elves return to the SANG for Christmas!

We've heard reports that the Christmas elves will be returning to the Central SANGs this year from the **16th to 22nd December**.



We are calling on you, once again, to make sure they're not getting up to mischief so why not take a festive walk through the Central SANGs and see how many you can spot!



The elves mentioned that they love receiving letters. If you would like to send them a letter or a drawing, they would certainly write back and send a little Christmas gift!

Please send letters to: **The Christmas Elves, Mindenhurst Project Office, Newfoundland Road, Deepcut, GU16 6SR.**

Alternatively just send a photo of your letter to [hello@mindenhurst.co.uk](mailto:hello@mindenhurst.co.uk) and we will pass it on.

Don't forget to share pictures of your elf hunt with us on Facebook at [Facebook/MindenhurstDeepcut](https://www.facebook.com/MindenhurstDeepcut)

## Community drop-in and Christmas Coffee Morning

We invite you to join us for our monthly community drop-in, which is taking place at a different time and date in December.

This month we'll be hosting a festive coffee morning on **Wednesday 21st December** between **10am and midday**.

As usual, we'll be welcoming you to our Project Office on Mindenhurst Road, we hope to see you there!

## Site contact details

@ [hello@mindenhurst.co.uk](mailto:hello@mindenhurst.co.uk)

📞 Senior Project Manager: Ed Martin 07823 354 295

📘 [facebook.com/MindenhurstDeepcut](https://www.facebook.com/MindenhurstDeepcut)

Please visit our dedicated project website for regular construction updates, upcoming events and other on-site news: [mindenhurst.co.uk](http://mindenhurst.co.uk)

