



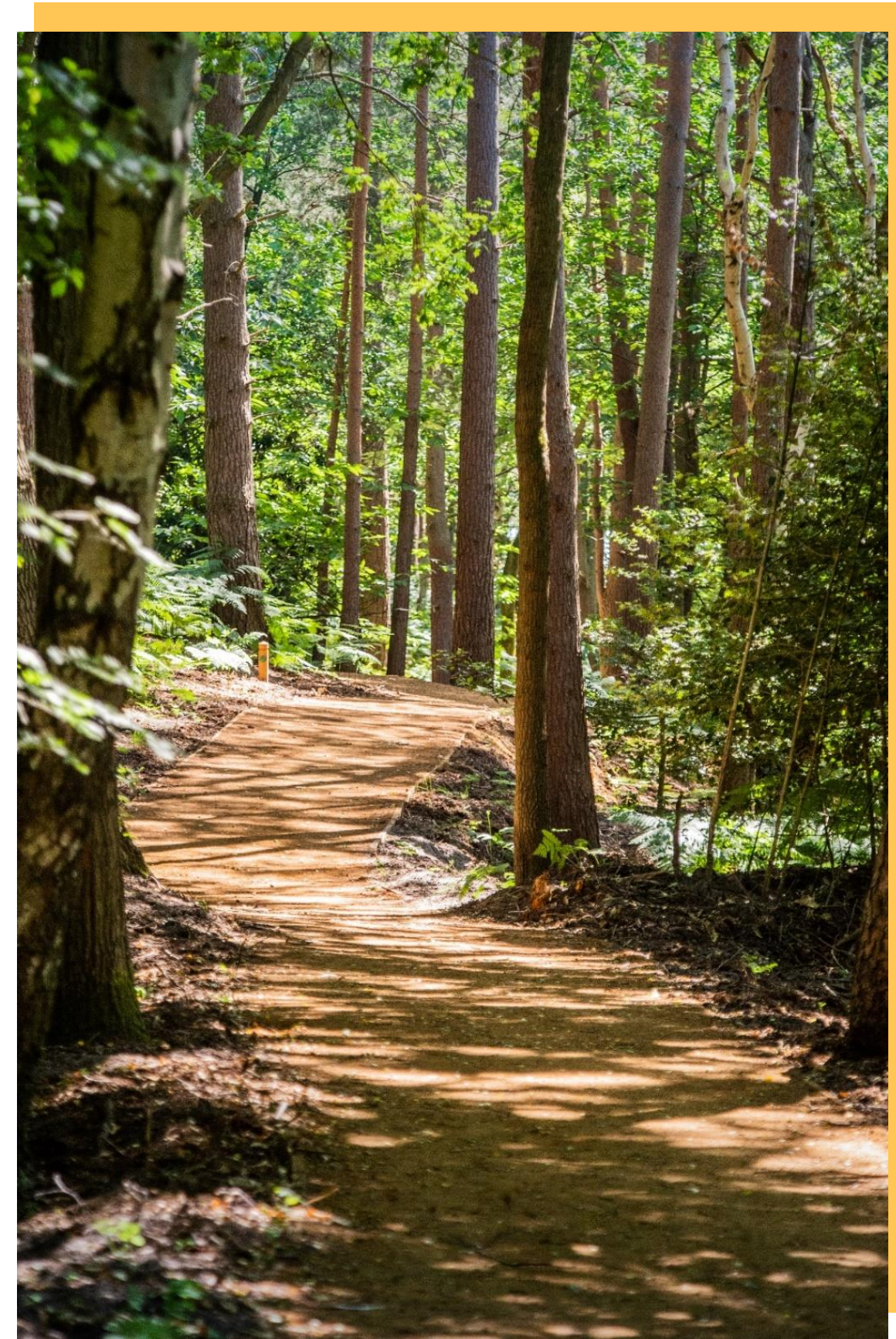
Formal Park Planning Application - Meeting with Residents Groups

January 2022



AGENDA

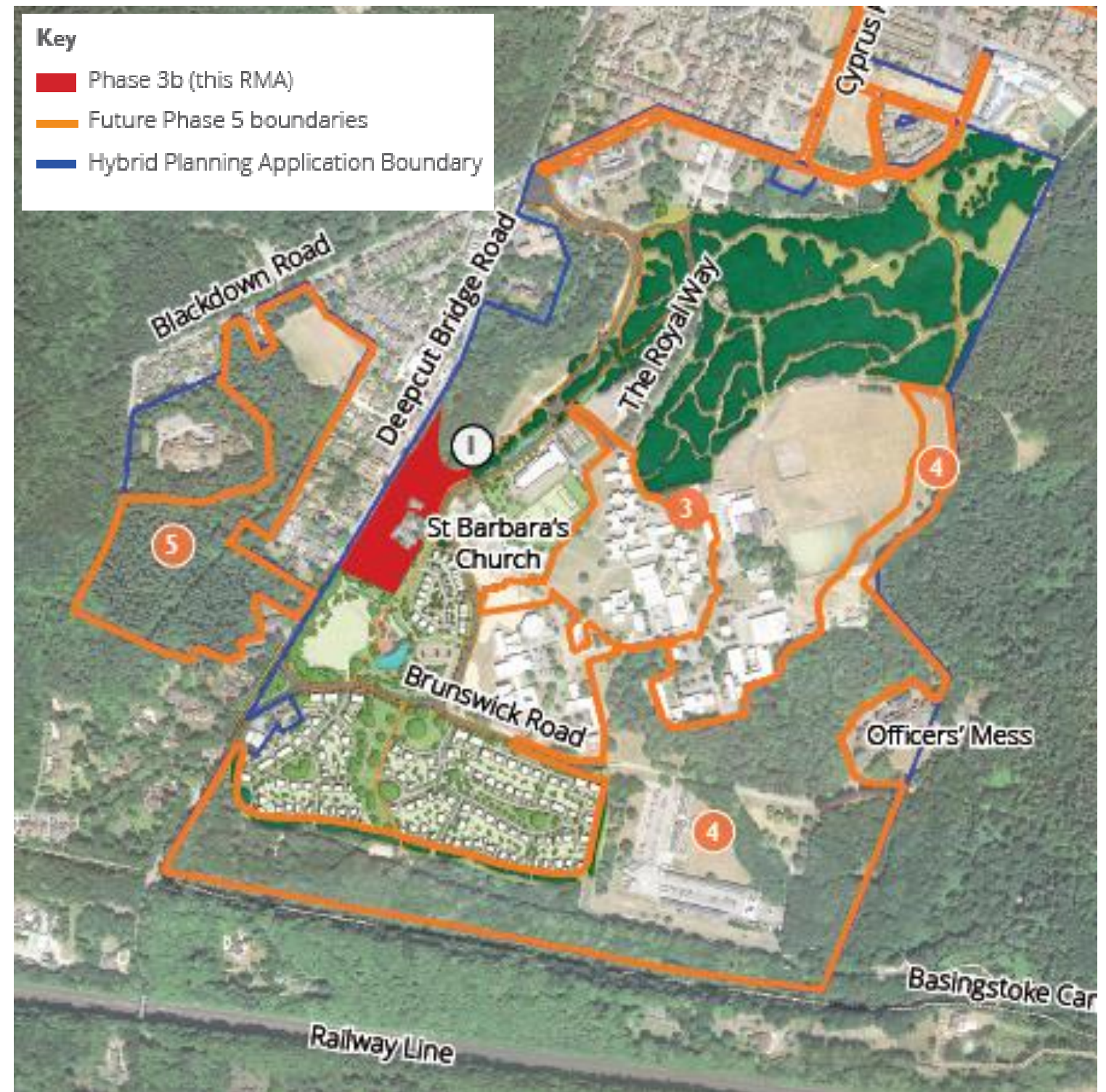
- 1. Formal Park RMA**
- 2. Questions**
- 3. AOB**





FORMAL PARK PROPOSALS

- The formal park is a requirement under infrastructure Phase 3b of the Hybrid consent
- Planning application 21/1163/RRM seeks to create a formal park from the former parade ground, providing an important community hub area around the Church and its curtilage.
- The Church and Cemetery are retained, preserved and their settings enhanced
- The Church Hall (Phase 3d) will come forward under a separate application.





FORMAL PARK PROPOSALS



KEY

- 1 Formal Park Area
- 2 Car park with enhanced landscaping
- 3 Parade to maintain views to Church
- 4 Car spaces reserved for Church uses
- 5 Informal path network through the park area
- 6 Existing trees retained
- 7 Potential Memorial Art Piece
- 8 Local Area of Play (with Seating and children's play)
- Pedestrian / cycle routes
- Pedestrian routes



FORMAL PARK PROPOSALS





TREE REMOVAL

Tree Categories

- **Category B**
Moderate quality with an estimated remaining life expectancy of at least 20 years with potential to make a significant contribution.
- **Category C**
Low quality with an estimated remaining life expectancy of at least 10 years or young trees with a stem diameter below 150mm.

Tree Removal

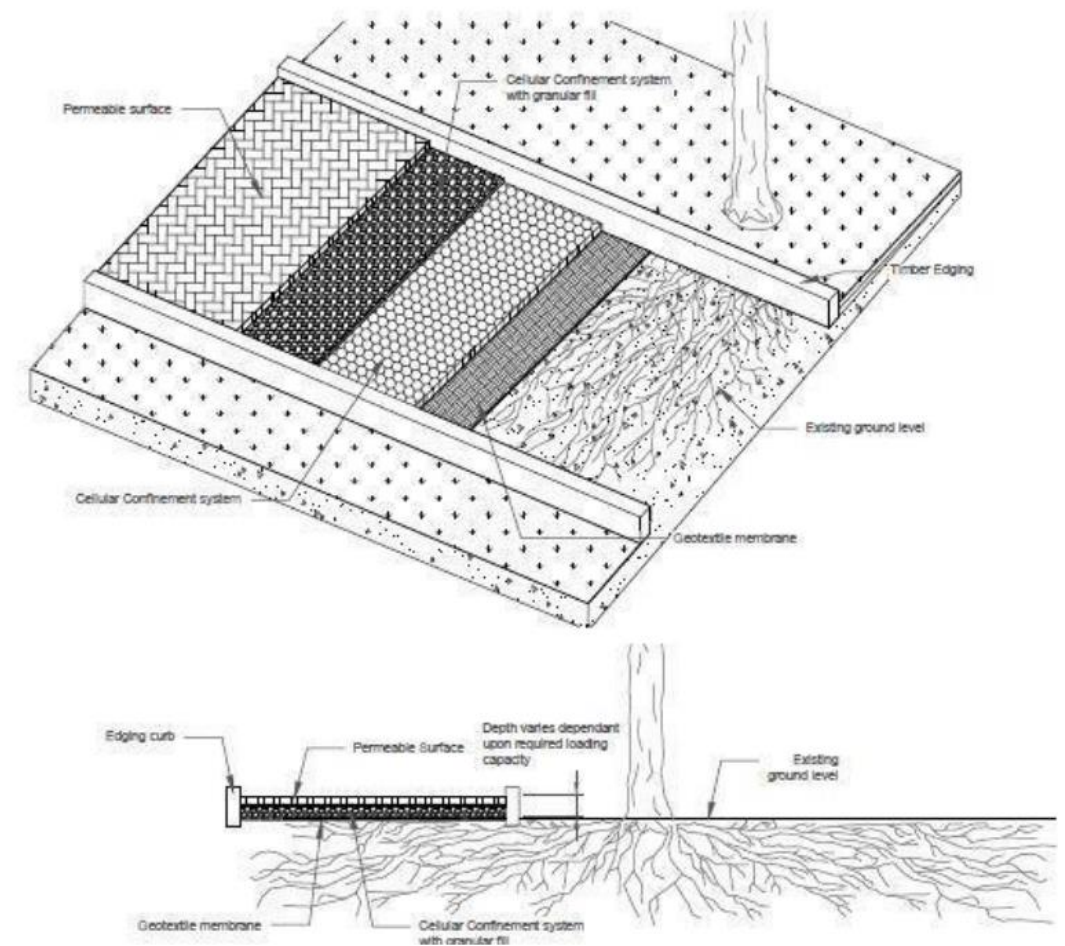
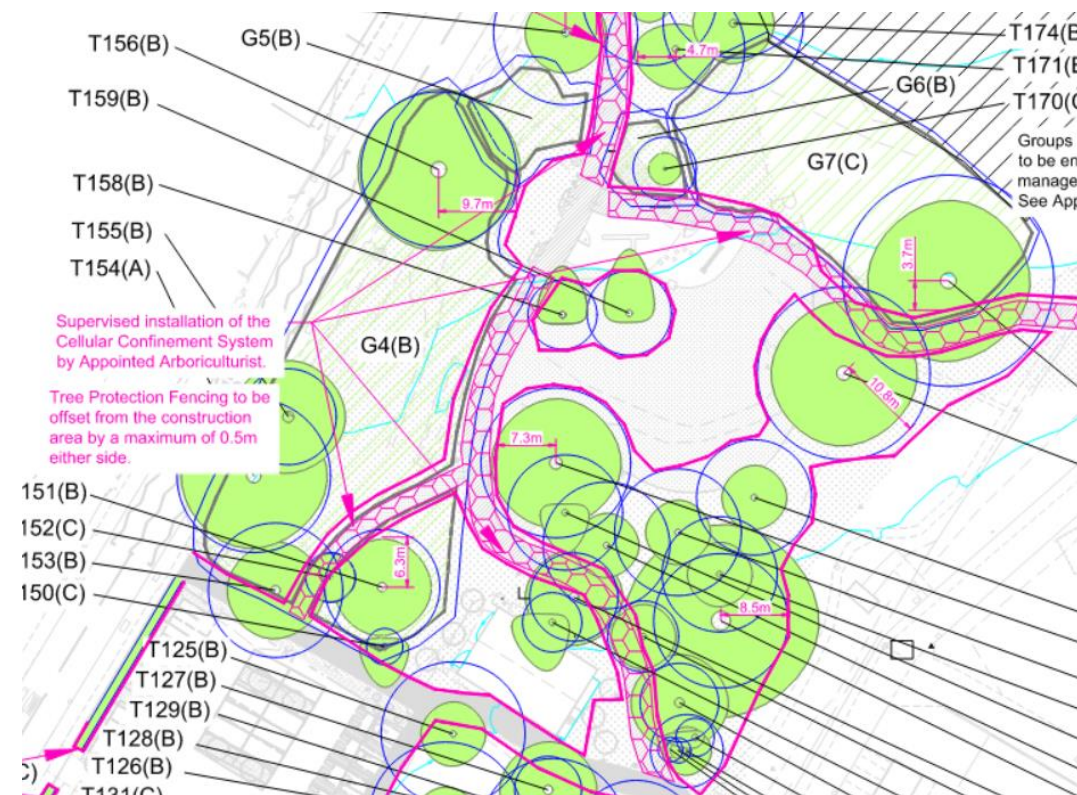
- 1 category B tree, 10 category C trees and 1 Category U tree are to be removed.
- Part removal of 4 groups and the full removal of one group will also be required.





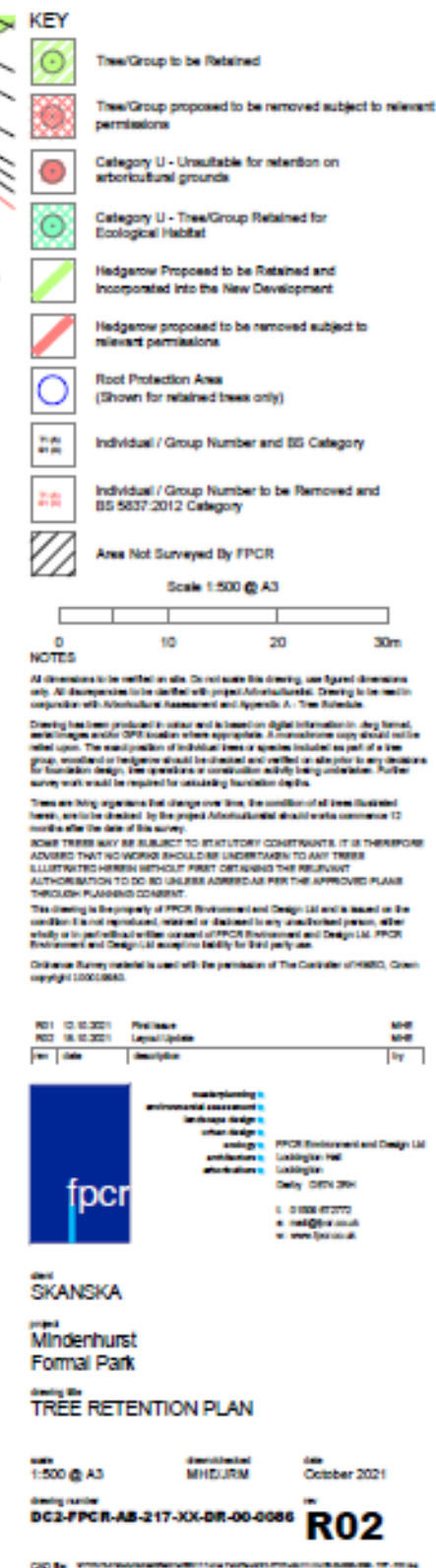
TREE RETENTION

- 30 trees retained even though the new footpath passes through the root protection area
- Path constructed using no-dig construction methods. A cellular confinement system ensures that roots are not damaged during construction or soil compacted in the future.
- Installation of cellular confinement method developed by arboriculturist
- Installation supervised by appointed arboriculturist











New Trees



Formal Park Planting Schedule -

Trees

Qty.	Species	Girth (cm)	Overall Height (m)	Form	Clear Stem (cm)	Root Condition
1	Acer campestre 'Field Maple'	18-20	4.0-4.5	Semi mature	175- 200	RB
6	Acer campestre 'Street Wise'	18-20	4.0-4.5	Semi mature	175- 200	RB
6	Carpinus betulus 'Frans Fontaine'	18-20	4.0-4.5	Semi mature	175- 200	RB
1	Quercus robur	25-30	5.0-6.0	Semi mature	min 200	RB
1	Tilia cordata 'Green Spire'	18-20	4.0-4.5	Semi mature	175- 200	RB
6	Pinus sylvestris	-	2.5-3	-	-	RB

Specimen Shrubs

Qty.	Species	Height/ Spread (cm)	Habit	Planting Density	Pot Size (L)
10	Cornus sanguinea 'Midwinter Fire'	45-60	Branched	As shown	3
4	Pinus sylvestris 'beuvronensis'	50-65	Bushy	As shown	3

Shrub Mix A

Percentage (%)	Species	Height/ Spread (cm)	Habit	Planting Density (m²)	Pot Size (L)
30	Corylus avellana	45-60	Branched	2	2
30	Crataegus monogyna	45-60	Branched	2	2
10	Ilex aquifolium	45-60	Branched	2	3
15	Prunus spinosa	45-60	Branched	2	3
15	Rosa canina	45-60	Branched	3	2

Shrub Mix B

Percentage (%)	Species	Height/ Spread (cm)	Habit	Planting Density (m²)	Pot Size (L)
20	Berberis vulgaris	45-60	Branched	2	2
10	Carex divulsa	45-60	Branched	3	3
10	Carex flacca	45-60	Branched	3	3
20	Erica carnea	20-30	Bushy	3	2
20	Euonymus europaeus	40-60	Branched	2	3
20	Ruscus aculeatus	20/30	Several shoots	2	2



Questions & AOB



