

MINDENHURST

Construction Update

January 2022



CREATED WITH CARE BY
SKANSKA

Welcome to our monthly construction update newsletter, which we use to keep you up to date with the latest news from Mindenhurst.

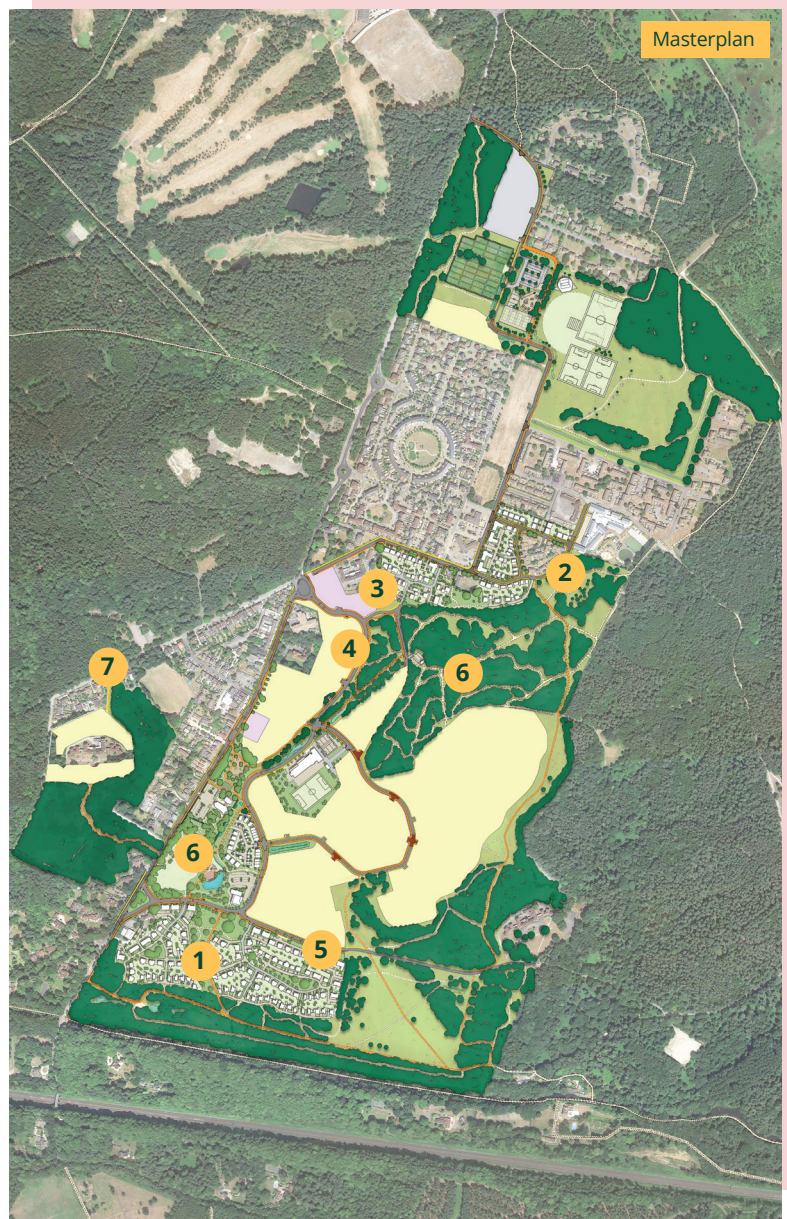
Skanska is committed to keeping the communities we operate within up to date with construction works and we continually seek to minimise the impact of our construction work on local residents. Our regular community newsletter seeks to give you construction news updates and a direct, on-site point of contact for any concerns or queries you may have.

Construction Update

- 1 Continuing with soft and hard landscaping to form the footpaths located on the Green Swathe.
- 2 Remedial works will be commencing on the eastern landfill to adjust the footpath located in this area. Planting will also continue to the eastern landfill.
- 3 During January we will complete the remediation works on the Bovis Bank. Landscaping works will commence in this area which will include the planting of shrubbery.
- 4 Planting works will commence on the western landfill, which is the area opposite the Bovis Bank site, located just off the Royal Way.
- 5 Works will commence to the CALA 2nd Phase Entrance (Parcel M2). This will include realigning footpaths and relaying the road. This should not affect access for current CALA residents but will affect deliveries for the new CALA homes being built.
- 6 Maintenance works to the Central SANG and Village Green will continue throughout January 2022.
- 7 Utilities will be installed in the multi-service utility trench located on Blackdown Road. These will commence on 4th January 2022 and continue throughout the month.

February

We will start preparation work for the external refurbishment of St Barbara's Church. This will begin with the erection of scaffolding and the felling of a tree on the right hand side of the church. The tree was causing damage to the church and is being removed with agreement from SHBC. Local residents will be informed about these works in advance but please check the news page of our website for current updates.



Site contact details

@ hello@mindenhurst.co.uk

Senior Project Manager: Ed Martin 07823 354 295

Please visit our dedicated project website for regular construction updates, upcoming events and other on-site news: mindenhurst.co.uk



Christmas Tree Recycling

Don't know what to do with your Christmas Tree now the festivities are drawing to an end? We have set up a local recycling point for Christmas trees so they can meet a sustainable end! We will chip all the trees left at our office and this will be used as natural mulch across the development.

You can recycle your Christmas tree until **Friday 14th January 2022** at our project office, which is located:

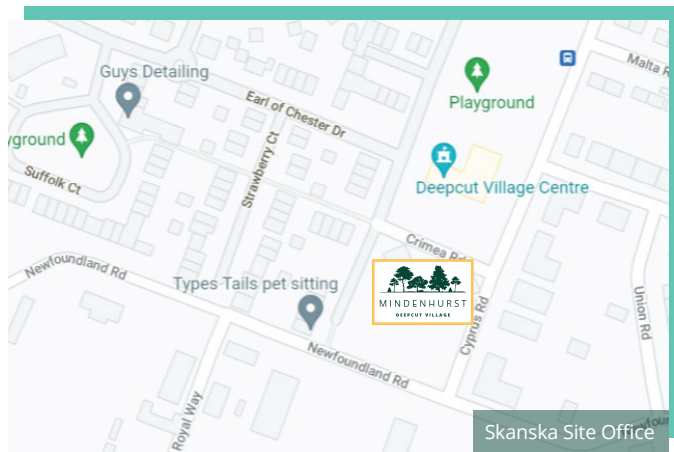
Skanska Site Office (see map below)

Newfoundland Road

Deepcut

GU16 6SR

Drop your tree in the 'Christmas Tree Recycling Area' of the car park and we will do the rest for you.



Big Garden Birdwatch

Take part in the RSPB's Big Garden Birdwatch from **28th - 30th January 2022**. Mindenhurst is rich with wildlife and we are always keen to encourage residents to get out and explore what the areas of nature have to offer!

Register your participation at www.rspb.org.uk/get-involved/activities/birdwatch/birdwatch-take-part/ and download the RSPB's Big Garden Birdwatch guide and start spotting your local bird species!

When you see local Mindenhurst species make sure you snap a photo and send them to us at: hello@mindenhurst.co.uk, for a chance to be featured on our community website: mindenhurst.co.uk



Christmas Tree Recycling

The Frog at Mindenhurst

Construction of a new Hall & Woodhouse multi-million-pound community pub is under way in the village of Mindenhurst, Surrey.

The pub will be named **'The Frog at Mindenhurst'** and is located on the corner of Brunswick Road, overlooking the lake and village green. The opening will also boost local employment by creating an estimated 40 new job roles.

The Frog's layout has been carefully considered with dedicated areas for dining. Additionally, a pantry has been created to provide a cozy setting for guests to enjoy everything from a warming coffee and homemade pastries, to a pint of Hall & Woodhouse's famous Badger beer.

Noticeable key features of the building include an extensive glazed gable end and an outdoor fireplace on the large veranda.

For further information on the design of the pub and construction updates please visit: mindenhurst.co.uk/news

Sign-up to e-newsletter

In addition to this new regular construction newsletter, we also distribute an e-newsletter to subscribers that provides updates on any changes to the construction programme, including unexpected road closures.

Signing up to this e-newsletter means you will receive the latest news quicker, and a digital copy of our regular construction newsletters.

Please visit our website mindenhurst.co.uk/get-in-touch to subscribe today!

Site contact details

@ hello@mindenhurst.co.uk

Senior Project Manager: Ed Martin 07823 354 295

Please visit our dedicated project website for regular construction updates, upcoming events and other on-site news: mindenhurst.co.uk

